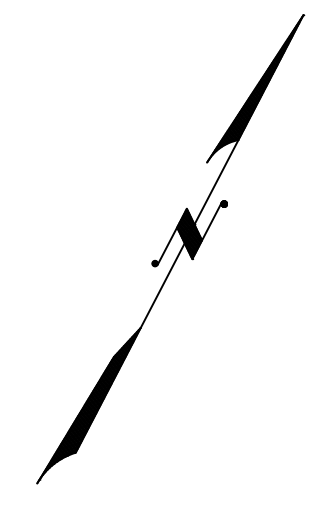
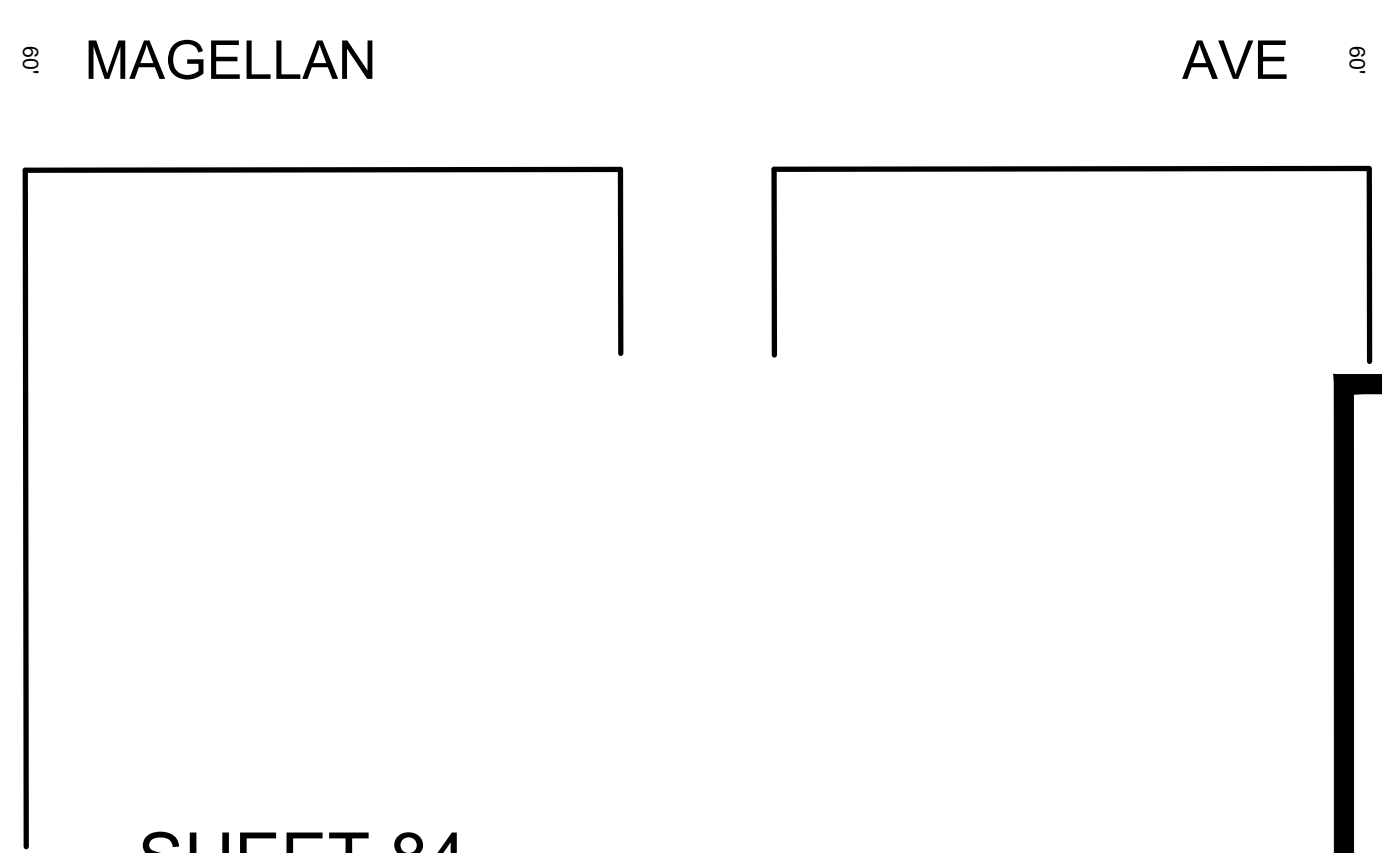
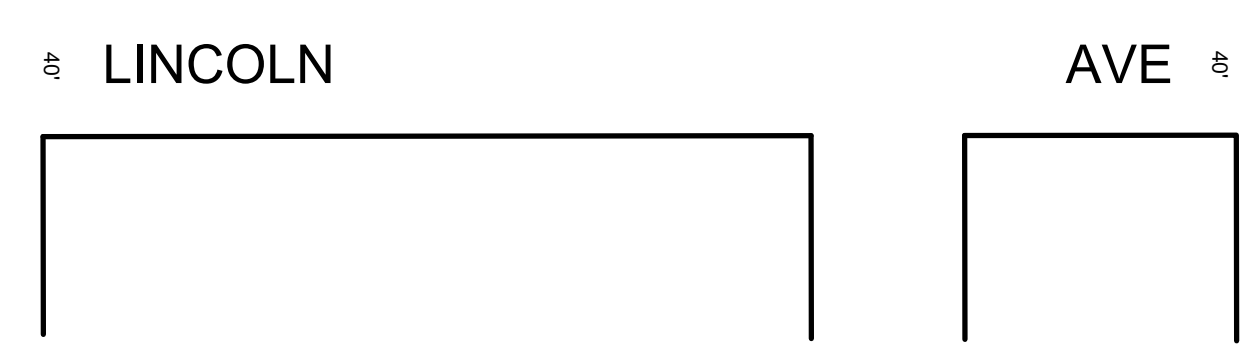
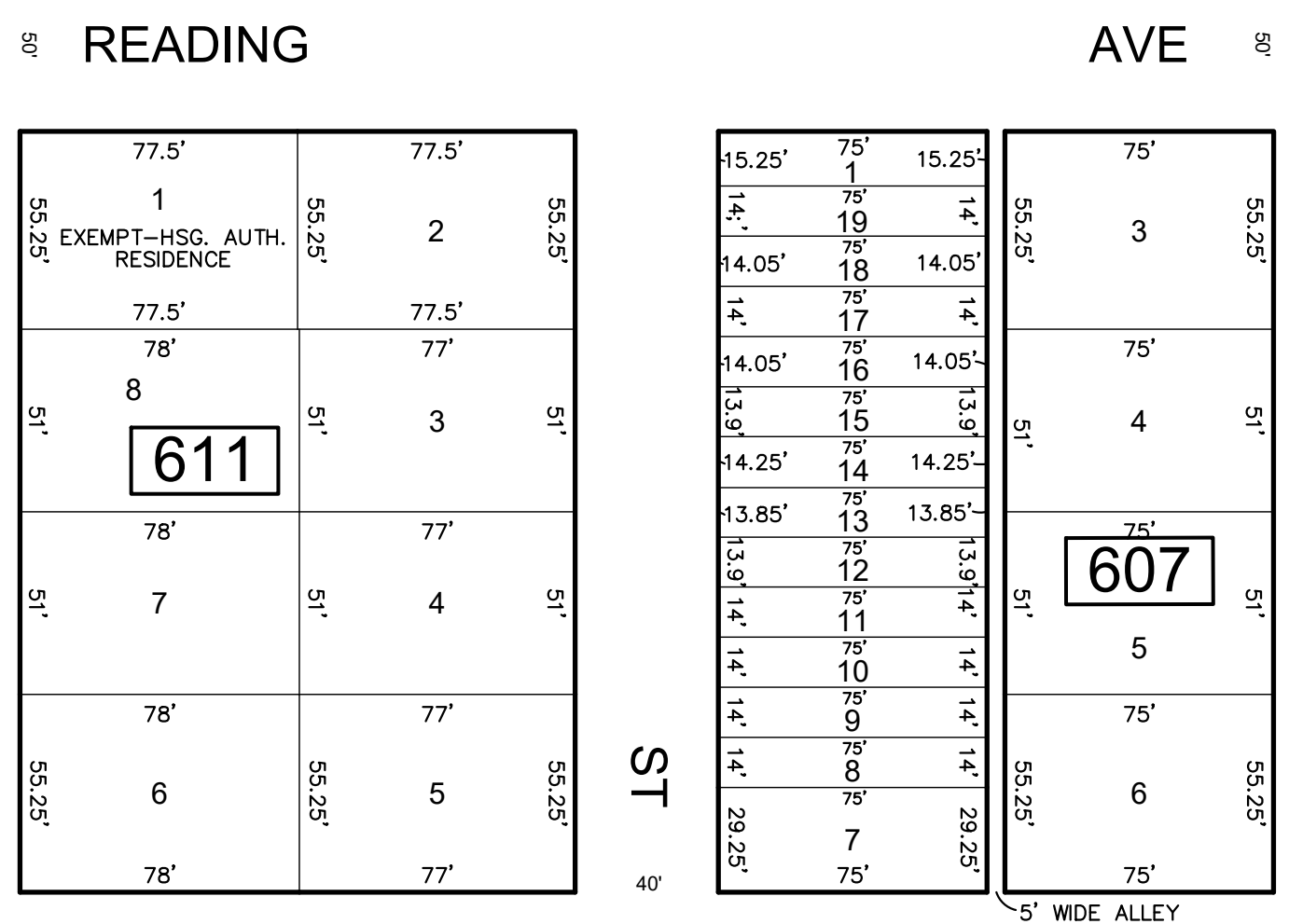
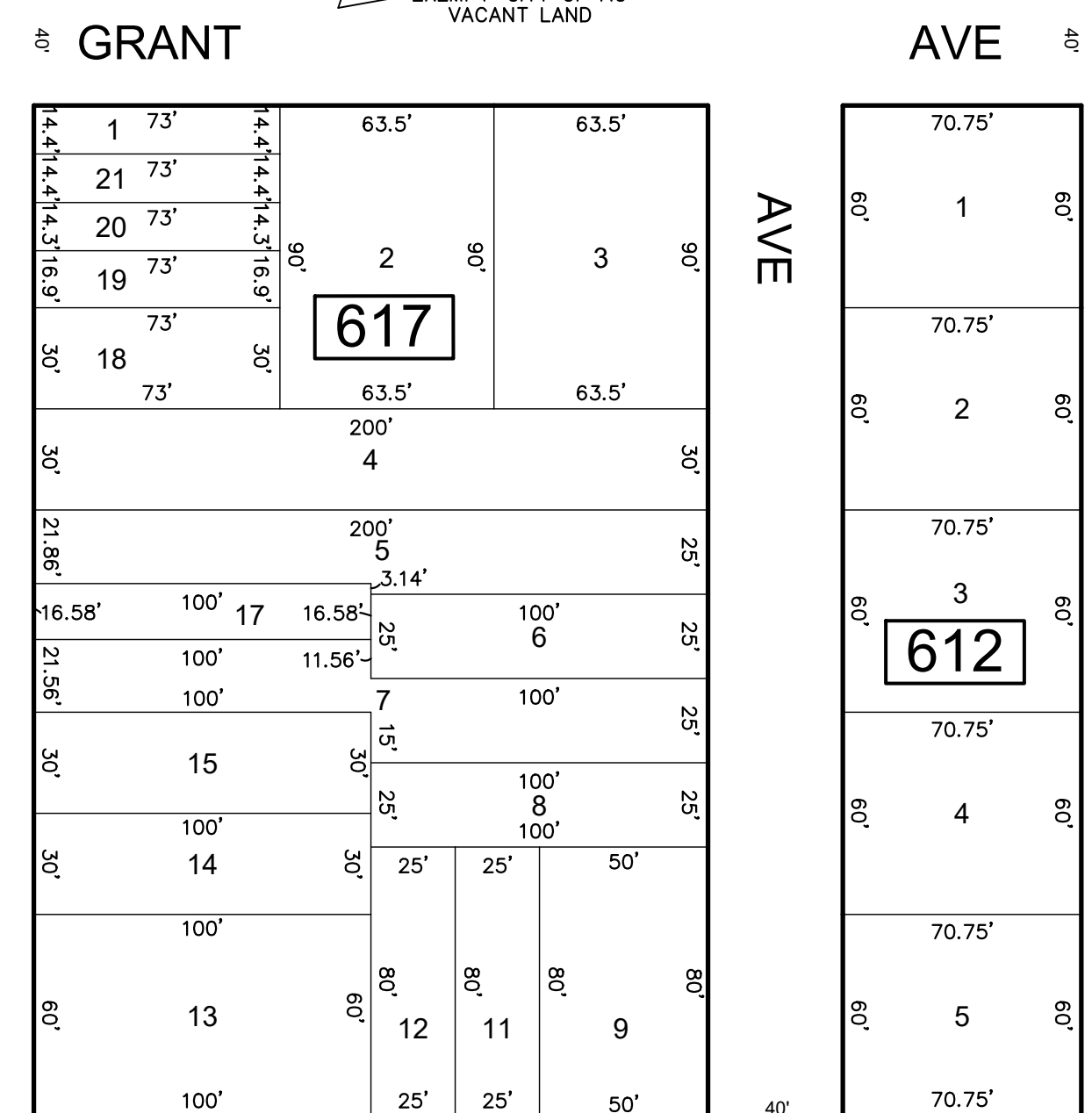
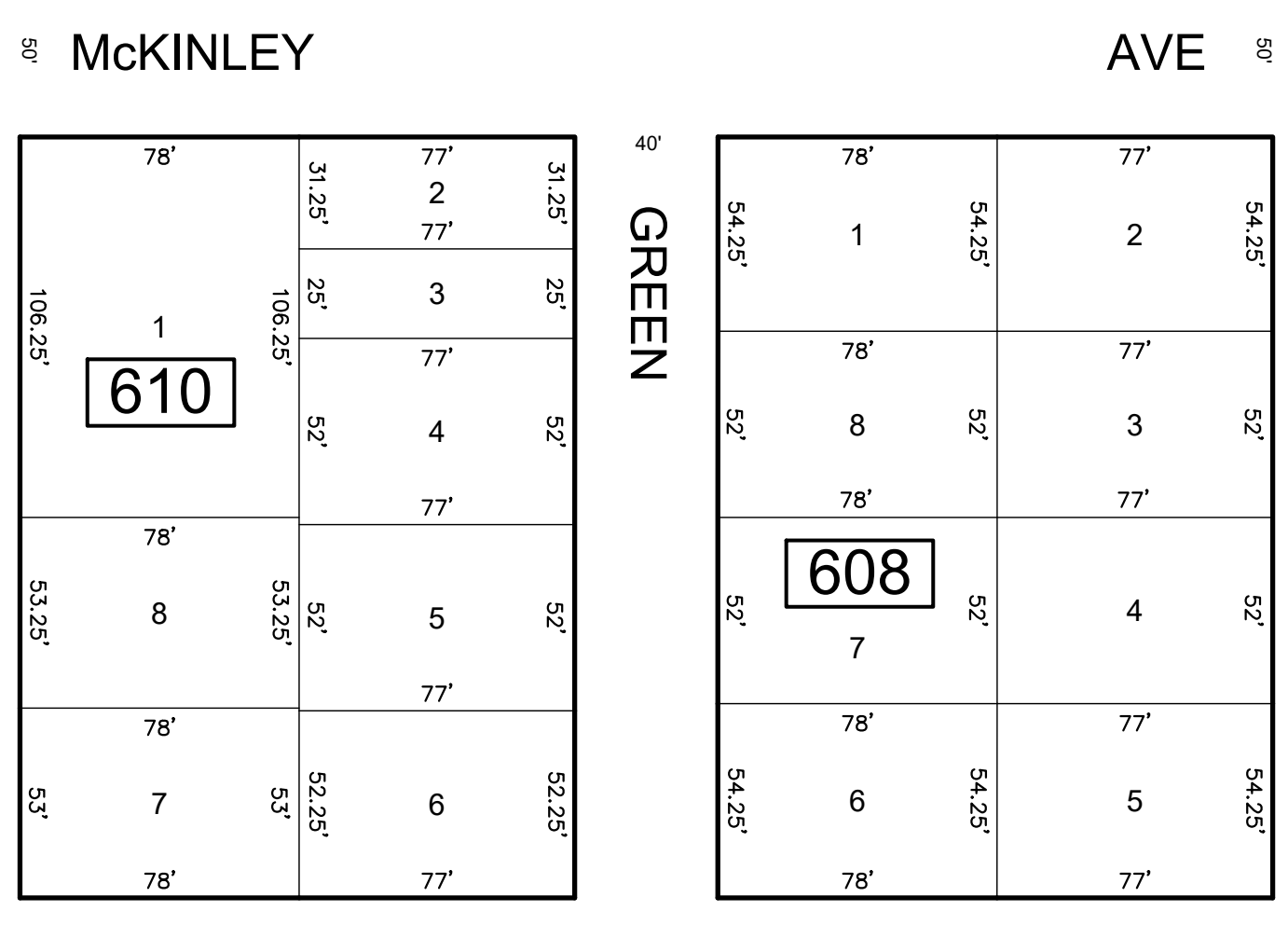
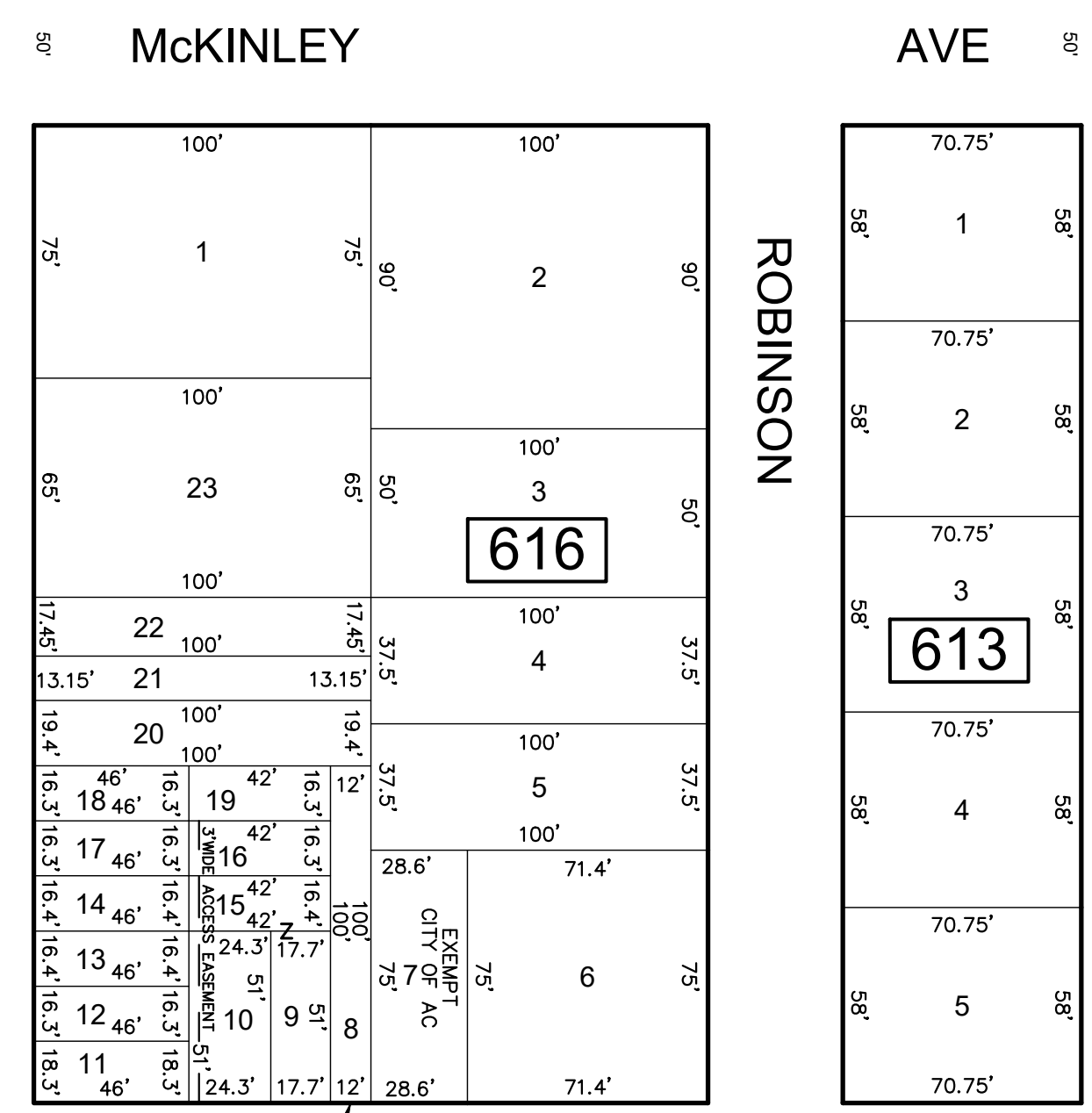
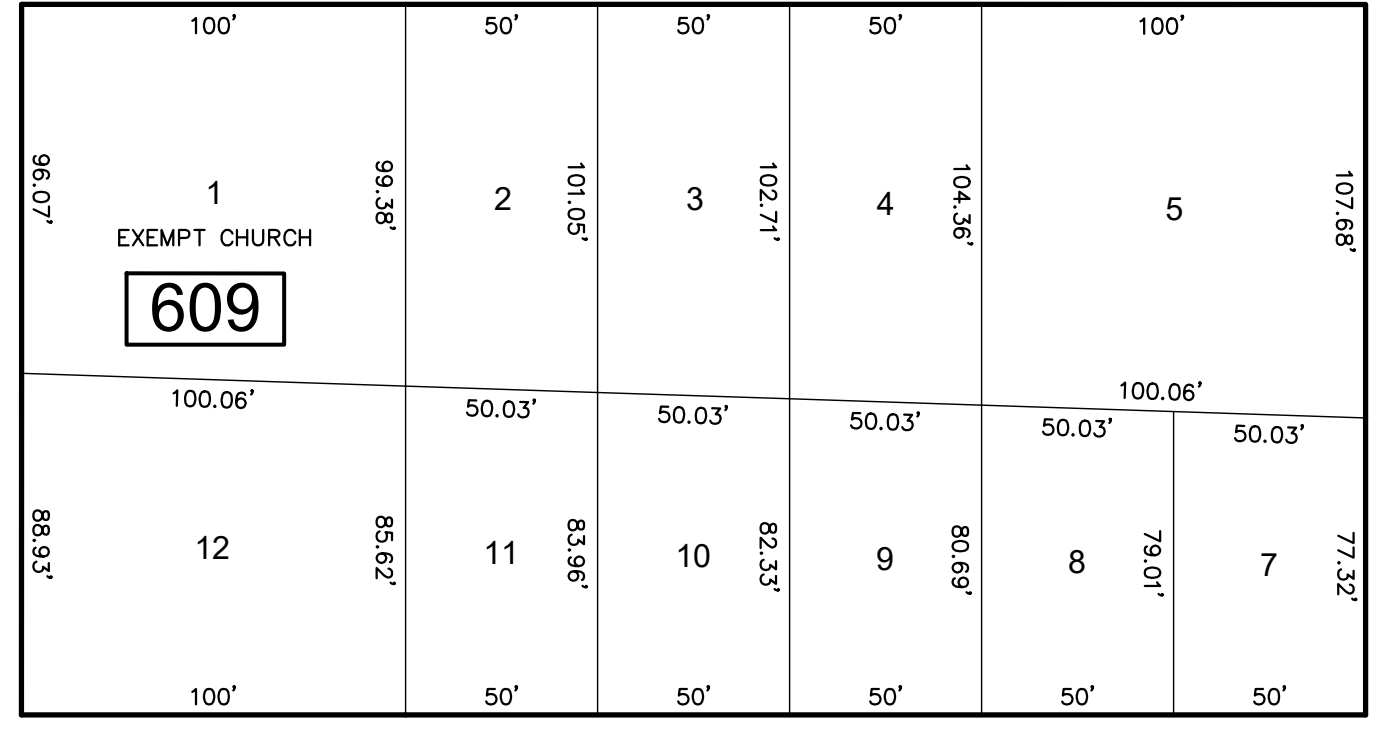
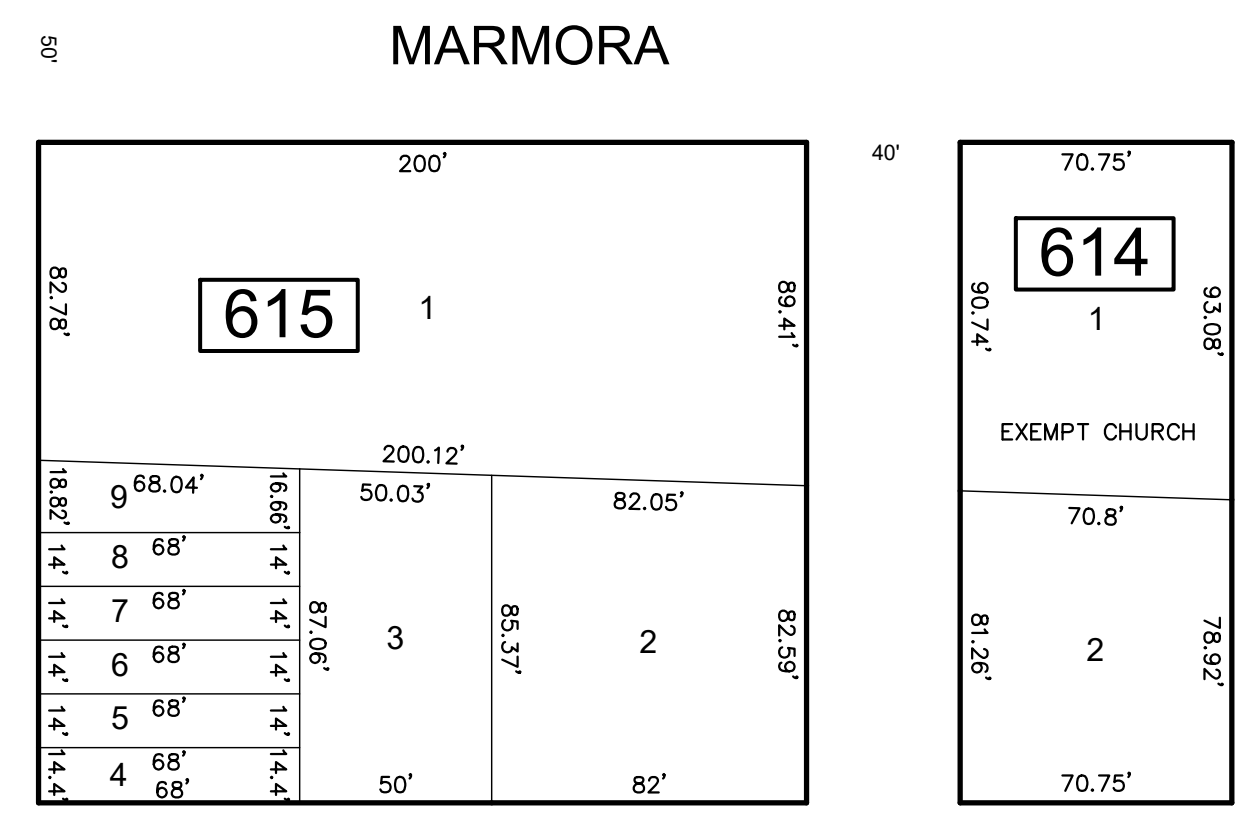


REVISIONS				
DATE	BY	LIC. NO	BLOCK	LOT
08/2013	CHARLES A. ATKINSON-ARH	33994	609	2
05/2017	ED CLAY - ARH	34842	617	9-10
04/2019	ED CLAY - ARH	34842	607	2



SHEET 104



SHEET 102

SHEET 100

DR. MARTIN LUTHER KING, JR. BLVD

THIS SHEET HAS BEEN DRAWN USING COMPUTER AIDED DRAFTING/DESIGN (CADD)

THIS MAP HAS BEEN GIVEN A FORMAL CERTIFICATION BY THE DIVISION OF TAXATION ON NOVEMBER 25, 1997, SIGNED BY WILLIAM H. BLACK, CTA AND ASSIGNED SERIAL NUMBER 778

**TAX MAP**  
**CITY OF ATLANTIC CITY**  
 ATLANTIC COUNTY, NEW JERSEY  
 SCALE: 1" = 50'  
**JOSEPH M DOLAN, PLS, PP**  
 MUNICIPAL LAND SURVEYOR  
 NEW JERSEY LICENSE NO. 23930  
 OFFICE OF THE CITY ENGINEER  
 603 CITY HALL  
 ATLANTIC CITY, NEW JERSEY 08401

SHEET 84